

# OCCUPATIONAL THERAPY ASSISTANT



**McLennan**  
C O M M U N I T Y  
**COLLEGE**



# Faculty –

Laura Shade, OTR

254-299-8154

[lshade@mclennan.edu](mailto:lshade@mclennan.edu)

- Kristy Stead, COTA
- 254-299-8525
- [kstead@mclennan.edu](mailto:kstead@mclennan.edu)

# An Occupational Therapy Practitioner Is:

- A *facilitator* of the patient/client's struggle toward independence – of however much or little that person is capable.

# An Occupational Therapy Practitioner Is:

- The practitioner is not the repository of some “cure” but the link in assisting a person in finding his or her own abilities or capacities.
- The profession’s philosophical base emphasizes that health involves body, mind, and spirit....in total integration.

# An Occupational Therapy Practitioner Is:

- Dysfunction in any part affects the whole person.
- If a person loses the ability to walk, it is not only his or her legs that are deficient; the entire being is profoundly affected!

*Barbara Sabonis-Chafee*

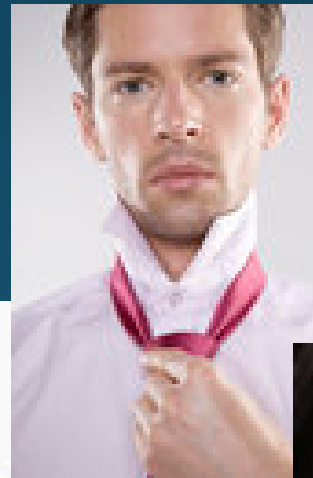
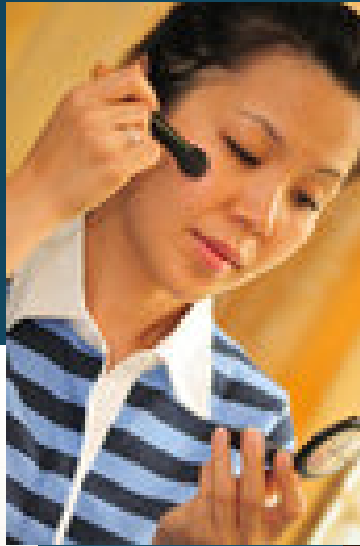
# What is Occupational Therapy?

- In its simplest terms, occupational therapists and occupational therapy assistants help people of all ages participate in the things they want and need to do through the therapeutic use of everyday activities (occupations).



# What are Occupations?

- Activities of Daily Living



# What are Occupations?

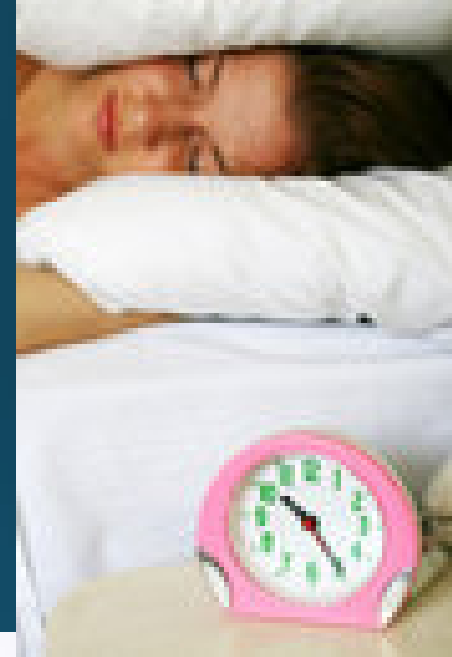
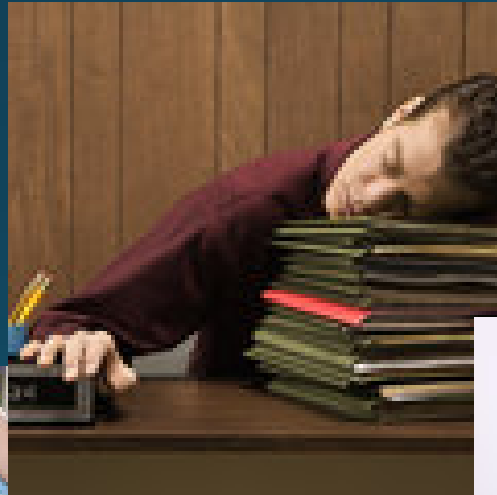
- Instrumental Activities of Daily Living





# What are Occupations?

- Rest and Sleep



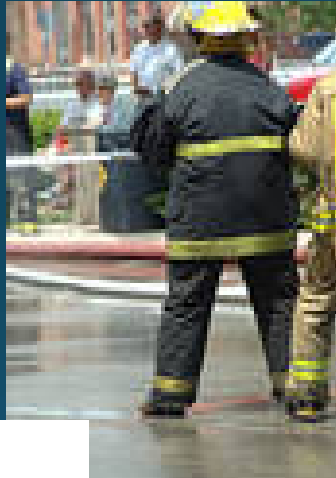
# What are Occupations?

- Education



# What are Occupations?

- Work





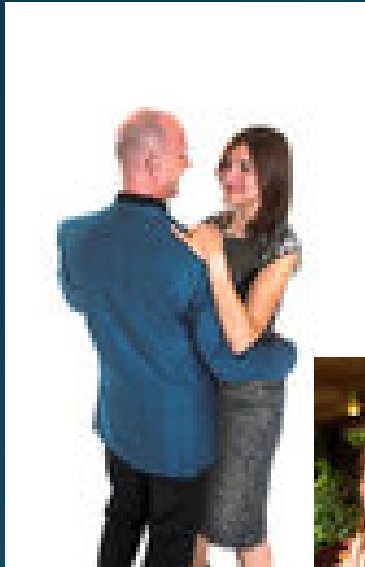
# What are Occupations?

- Play
- Leisure



# What are Occupations?

- Social Participation





# What is Occupational Therapy?

- Occupational therapy helps people function in all of their environments (e.g., home, work, school, community) and addresses the physical, psychological, and cognitive aspects of their well-being through engagement in occupation ([www.aota.org](http://www.aota.org)).

# Occupational Performance is Impacted By:

- Client Factors
  - Values, Beliefs, and Spirituality
  - Body Functions
  - Body Structures

# Occupational Performance is Impacted By:

- Performance Skills
  - Motor Skills
  - Process Skills
  - Social Interaction Skills

# Occupational Performance is Impacted By:

- Performance Patterns
  - Habits
  - Routines
  - Rituals
  - Roles

# Occupational Performance is Impacted By:

- Contexts and Environments
  - Cultural
  - Personal
  - Physical
  - Social
  - Temporal
  - Virtual



# Occupational Therapy Is:

- A problem-solving approach that relies on critical thinking to:
  - Evaluate Function
  - Analyze Activities
  - Design Intervention that Facilitates Engagement in Occupations

# Who Are the People Served by Occupational Therapy?

- All ages
- Range of Problems
  - Neurological
  - Orthopedic
  - Musculoskeletal
  - Immunological
  - Cardiac
  - Pulmonary
  - Psychological

# Settings

- Hospitals
  - Acute Care
  - Outpatient
  - Inpatient Rehabilitation Unit/Hospital
  - Inpatient Psychiatry Unit/Hospital
  - Hospital-Based Skilled Nursing

# Settings

- Nursing Homes/Skilled Nursing Facility
- Clinics
- Schools
- Homes
- Community Settings
- Industry/Workplace
- Prisons
- Specialty Settings

# Employment Opportunities -

## Quick Facts: Occupational Therapy Assistants

<u>2019 Median Pay</u>	\$59,200 per yr \$28.46 per hr
Number of Jobs, 2019	55,100
Projected Growth	32% (Much faster than average)
Employment Change, 2019-2029	17,900



# Personality Characteristics

- Desire to Help Others
- Genuinely Like People
- Able to Relate to Both Individuals and Small Groups
- Appreciation of Diversity
- Typically Creative Thinkers
- Enjoy Hands On Work

# Personality Characteristics

- Skilled Problem Solvers; Able to Critically Think
- Respect for Human's Ability to Change
- Empathy
- Flexibility
- Interest in Life-Long Learning

# The Occupational Therapy Assistant Program

- A two-year program leading to an Associate in Applied Science (A.A.S.) Degree
- Begins each year in the fall
- Applications due June 1, 2021

# Upon Graduation

- Attained Entry Level Skills
- Must successfully pass the national certification examination administered by the National Board for Certification in Occupational Therapy (NBCOT)
- Must apply for and receive a Texas state license through the Executive Council of Physical Therapy and Occupational Therapy Examiners

# Accreditation

- *Accreditation: The Occupational Therapy Assistant Program is fully accredited by the Accreditation Council for Occupational Therapy Education (ACOTE) of the American Occupational Therapy Association (AOTA), located at 4720 Montgomery Lane, Suite 200, Bethesda, MD 20814-3449.*



# Admission Requirements

- Applied and Admitted to McLennan
- Applicants must be TSI Complete
- Must be ≥ 18 years of age and a high school graduate (or equivalent) at time of application
- Minimum of “C” in pre-requisite and co-requisite courses
- Minimum GPA 2.5 in prerequisite and co- requisite courses

# Prerequisite Courses

- BIOL 2401 Anatomy & Physiology I
- PSYC 2301 General Psychology
- ENGL 1301 Composition I
- HPRS 1206 Medical Terminology

# Co-Requisite Courses

- BIOL 2402 Anatomy & Physiology II
- Any 3-credit hour Creative Arts, Language, Culture, or Philosophy course
- PSYC 2314

# Volunteer or Observation Hours

- Applicants must complete forty (40) hours of volunteer work or work experience in two different settings (20 hours each setting), using the McLennan/OTA Occupational Therapy Experience form.
- **Due to Covid-19 this is NOT required for the 2021 application cycle only.**

# Volunteer or Observation Hours

Examples of occupational therapy settings:

- Acute Care Hospital Inpatient occupational therapy
- Outpatient occupational therapy
- Pediatric occupational therapy
- Acute inpatient rehabilitation hospital
- Mental health inpatient or outpatient setting
- Skilled nursing facility
- Home health occupational therapy

# References

- Applicants must also submit two (2) basic workplace skills assessment forms with the application materials. One form must be completed by an Occupational Therapist or Occupational Therapy Assistant. The other form may be completed by another reference (e.g. supervisor, teacher, employer, etc.).
- **Due to Covid-19 and lack of volunteer placement opportunities, these will not be required for the 2021 application cycle only.**

# Background Check

- **NOTE:** A felony (or certain misdemeanors) conviction may affect your ability to sit for the NBCOT certification examination or get a state license to practice as an OTA. A graduate who is not allowed by NBCOT to take the certification exam because of a felony conviction will probably not be able to get a Texas license as an OTA. Assistance with a conviction can be obtained through NBCOT and or ECPTOTE at:
  - [www.nbcot.org/character-review-process](http://www.nbcot.org/character-review-process)
  - [www.ptot.texas.gov/faq](http://www.ptot.texas.gov/faq)
- If you have any criminal convictions, you are advised to contact the program director for further advising.

# After Acceptance Into the OTA Program



- 1<sup>st</sup> Fall Semester

- ~ OTHA 1305 Principles of OT
- ~ OTHA 1341 Occupational Performance Birth through Adolescence
- ~ OTHA 2201 Pathophysiology in OT
- ~ BIOL 2402 Anatomy and Physiology II
- ~ PSYCH 2314 Lifespan Growth and Development

- 1<sup>st</sup> Spring Semester

- ~ Language, Philosophy, & Culture Elective or Creative Arts Elective
- ~ OTHA 1309 Human Structure and Function in
- ~ OTHA 1315 Therapeutic Use of Occupations or Activities I
- ~ OTHA 2209 Mental Health in Occupational Therapy

- 1<sup>st</sup> Summer Semester

- ~ OTHA 1161 Clinical I
- ~ OTHA 2211 Abnormal Psychology in Occupational Therapy
- ~ OTHA 1253 Occupational Performance for Elders

- 2<sup>nd</sup> Fall Semester

- ~ OTHA 1162 Clinical II
- ~ OTHA 1319 Therapeutic Interventions
- ~ OTHA 2231 Physical Function in OT
- ~ OTHA 2302 Therapeutic Use of Occupations or Activities II

- 2<sup>nd</sup> Spring Semester

- ~ OTHA 2266 Field Work Experience
- ~ OTHA 2235 Healthcare Management

- 2<sup>nd</sup> Summer Semester

- ~ OTHA 2267 Field Work Experience
- ~ OTHA 2230 Workplace Skills for the OTA

- Proof of health insurance
- Immunizations
  - Hepatitis B – Series of 3
  - Varicella (two shots or proof of titer)
  - MMR (two shots)
  - Tdap
  - Current Season Influenza
- TB 2-Step Test
- Background Checks
- Drug Screens
- American Heart Association Healthcare Provider Basic Life Support

# Clinicals

- Two Level I experiences (usually one full day a week)
- Two Level II experiences (full-time for eight weeks)
- Students are “guests” in the host facility
- Often is a “trial job interview”

# Occupational Therapy Assistant Essential Skills and Requirements

- Physical and Mental Requirements
- Communication Skills
- Intellectual Skills
- Behavior
- Professional Conduct and Appearance
- Essential Functions

# Questions?

Call or email and we will be happy to assist  
you!