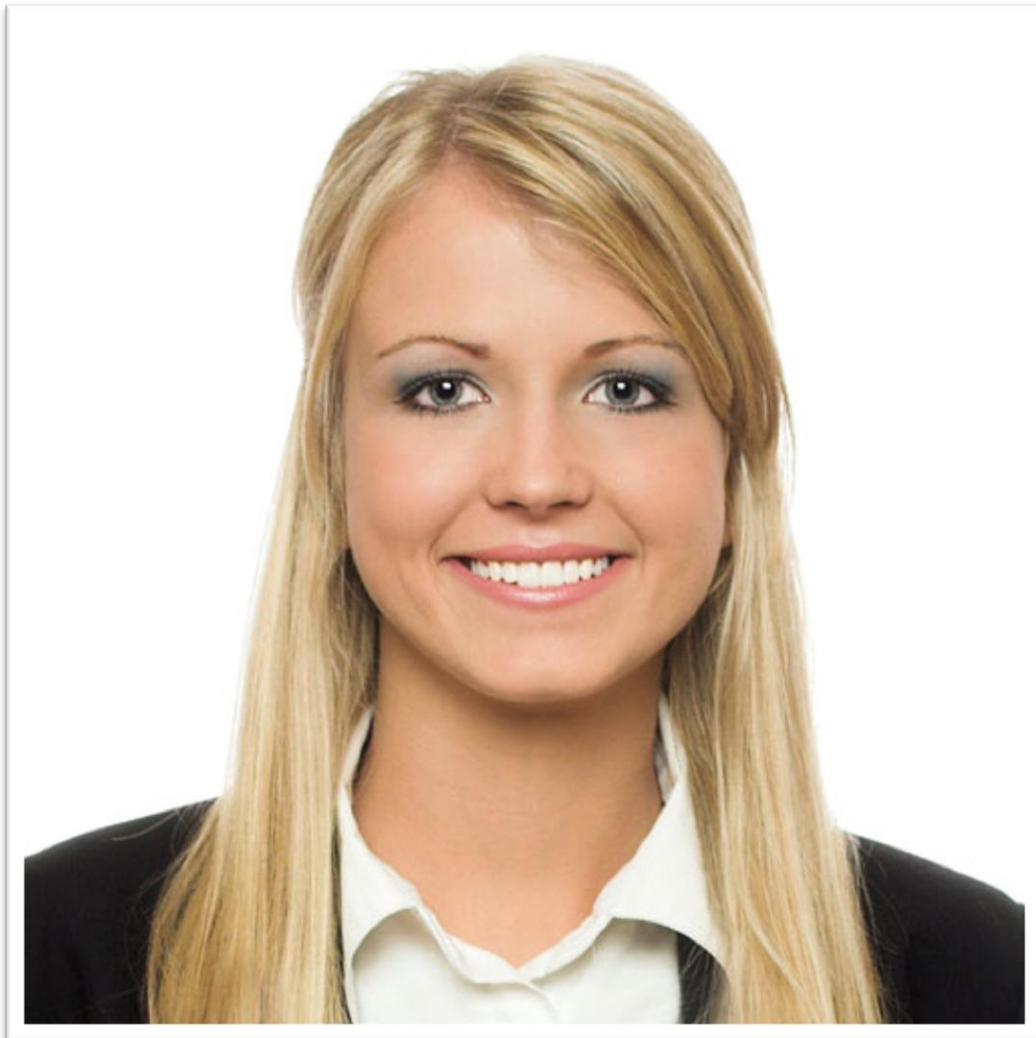


# Photo Submission Guidelines

When submitting your own photos, please make sure your photo meets these guidelines:

- Current self portrait
- Clear, good-quality photograph
- Background should be plain white
- Full face front view
- Your head is centered and facing straight towards the camera
- Eyes open and clearly visible (no covering)
- Without any head covering (except for religious beliefs)
- Nothing covering the face
- No sunglasses or heavily tinted glasses
- Glasses may be worn as long as the eyes are clearly visible

Below is an example of photo that will be approved.



**Photos including any of the following will not be allowed:**

- Someone other than yourself, (animal, baby, parents, inanimate object)
- Sunglasses
- Tilted heads or a profile shot
- Comical photos or photos with gestures
- Colored background besides white or objects/scenery in the background
- Hats
- Group photos
- Low-quality images
- Anything besides the acceptable images described above



Pets



Sunglasses



Side-Profile



Comical



Hat



Group



Low-Quality photo



Colored background/head cut-off